

ABLOY® PROTEC

High security cam locks



ABLOY® PROTEC is the culmination of 90 years of world-leading development of the rotating disc cylinder.

HIGH SECURITY ABLOY® PROTEC CAM LOCKS

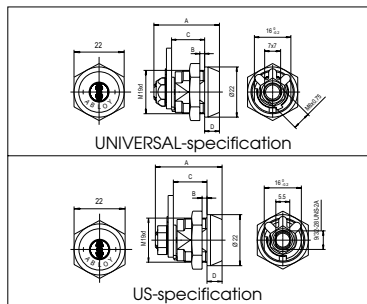
CL100N, CL101N, CL103N, CL104N, CL105N, CL106N, CL107N, CL108N, CL200N, CL201N, CL202N, CL203N

APPLICATIONS

ABLOY® PROTEC cam locks are specially designed for demanding high security applications such as parking meters, cash dispensers, vending machines, slot machines, cash/safe deposit lockers, and pay phones.

Cams are available as an accessory, please refer to the ABLOY® CAM LOCKS brochure. In some models left handed operation is available on special request.

DIMENSIONS



MATERIAL AND FINISH

Detainer discs of tin bronze, cylinder drum and end nut of brass. Cam, governor, nut lock washer and hex nut of zinc-plated steel. Cylinder housing of chrome-plated brass. First disc of nickel-plated case-hardened steel. Locks CL105N and CL201N have a cylinder housing of chrome-plated case-hardened steel.

LOCK TYPE	UNIVERSAL SPECIFICATIONS									US-SPECIFICATION			
	CL100N	CL101N	CL103N	CL104N	CL105N	CL106N	CL107N	CL108N	CL200N	CL201N	CL202N	CL203N	
Dimensions (mm)	Overall length A	37	37	43	33	33	43	33	30,5	34,5	34,5	44,5	38,5
	Max door thickness B	13.5	13.5	19.5	9.5	9.5	19.5	9.5	5.5	9.5	9.5	19.5	13.5
	Max distance C	22.5	22.5	28.5	18.5	18.5	28.5	18.5	14.5	18.5	18.5	28.5	22.5
	Flange length D	6.5	6.5	6.5	6.5	6.5	6.5	6.5	8	6,5	6,5	6,5	6,5
Cam turns	90° Key removable in locked	X		X	X	X			X	X	X	X	X
	180° Position only	X		X	X	X			X	X	X	X	X
	360° Key removable in locked and unlocked positions		X				X	X					
Number of discs	11	11	11	9	9	11	9	7	9	9	11	11	
Material of cylinder housing	brass	brass	brass	brass	steel	brass	brass	brass	brass	steel	brass	brass	

HIGH SECURITY ABLOY® SWITCH LOCKS

EP400N, EP401N, EP402N

APPLICATIONS

ABLOY® PROTEC switch locks provide key-actuated switching for burglar alarms, control boxes and other high security applications.

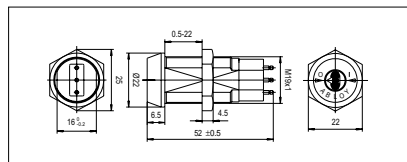
EP400N: key removable in NO and NC positions

EP401N: key removable in NO position

EP402N: momentary contact, key removable in NO position

Locks are suitable for panels from 0.5 mm to 22 mm in thickness.

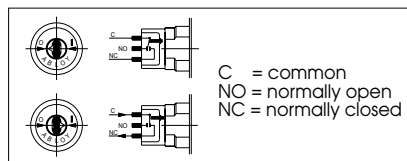
DIMENSIONS



MATERIAL AND FINISH

Cylinder housing of chrome-plated case-hardened steel. First disc of nickel-plated case-hardened steel. Switch actuator and switch holder brackets of moulded plastic. Other parts of brass.

WIRING DIAGRAM



MICROSWITCH LOCKS

Locks include a Honeywell microswitch 1SX1-H58 for contacting with AMP 0.058 in (1.47 mm) receptacles.

Electrical values

7 A, 250 VAC

7 A res., 28 VDC

4 A ind., 28 VDC

Working temperature -54°C...+120°C

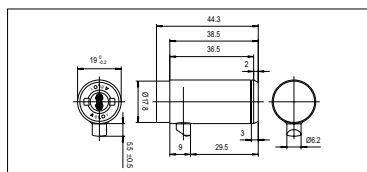
HIGH SECURITY ABLOY® PROTEC T-HANDLE LOCKS

CL290N – SPRING LOADED LATCH, CL291N – DEADLOCKING LATCH

APPLICATIONS

ABLOY® PROTEC T-handle locks are ideal for vending machines and for other locking handle applications. Steel bolt provides maximum resistance against attack by pulling.

DIMENSIONS



MATERIAL AND FINISH

Cylinder housing of chrome-plated steel. Plug face chrome-plated case-hardened steel. First disc of nickel-plated case-hardened steel. Bolt of nickel-plated steel. Key removable in locked position only. Number of discs: 9



Abloy Oy
Wahlforsinkatu 20
P.O. Box 108
FIN-80101 JOENSUU
FINLAND
Tel. +358 13 2501
Fax +358 13 250 2209



www.abloy.com